



CLARINET

LIGATURES
MOUTHPIECES & ACCESSORIES

BG COMMUNITY



JEAN-MICHEL BERTELLI



FABRIZIO MELONI



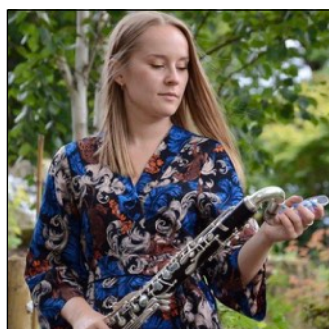
CALVIN FALWELL



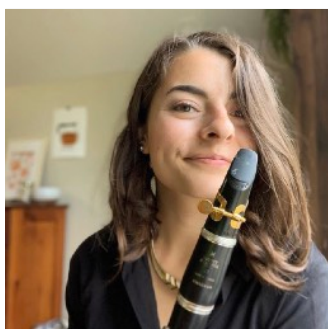
RICARDO MORALES



JAKUB BOKUM



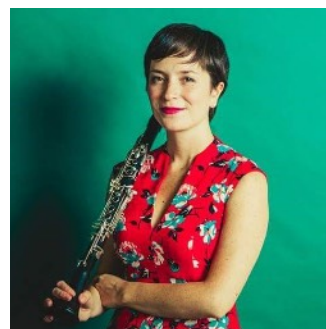
HANNAH SHILVOCK



DANIELLE JANOS



JESÚS ALCIVAR



KATHYA GALLEGUILLOS



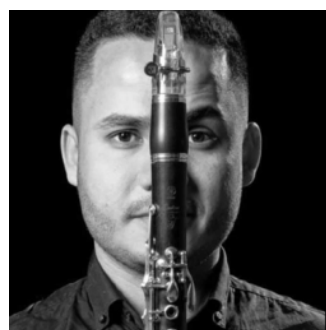
DAVID BLUMBERG



JOHN DE LA PAZ



MICHAEL DEAN



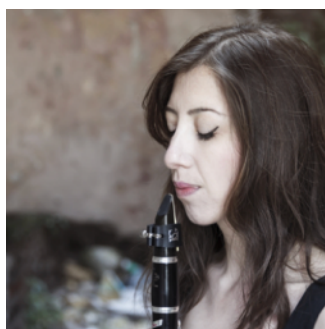
AXEL SÁNCHEZ



AMAURY VIDUVIER



JORGE MONTILLA

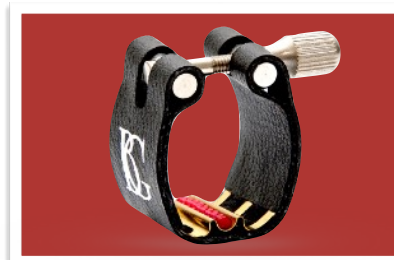
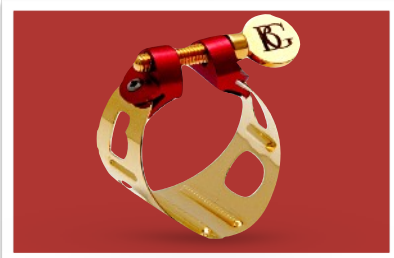
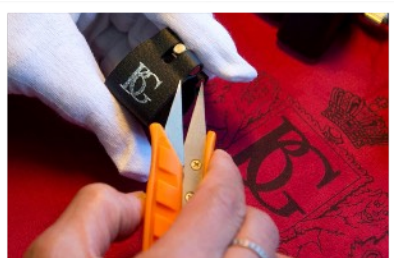
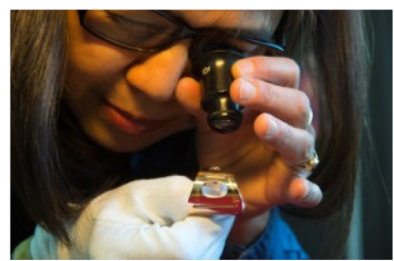


MERVE NUVARSIL



BENCE SZEPESI

TIPS OF FRANCK BICHON



EACH LIGATURE HAS ITS OWN SOUND BENEFIT

MUSICIANS FREQUENTLY ASK IF THE LIGATURE REALLY INFLUENCES THE SOUND OF THE INSTRUMENT. CAN A SMALL PIECE OF METAL OR FABRIC CHANGE THE COLOR, THE PROJECTION OR THE SOUND? **THE ANSWER IS YES.!**

THE MATERIAL (METAL OR FABRIC), ITS DENSITY, PLATING, THE POINT OF PRESSURE ON THE REED AND MANY OTHER FACTORS ARE ALL DECISIVE WHEN TALKING ABOUT THE COLOR OF THE SOUND AND ITS PROJECTION.

METAL LIGATURES ARE PERFECT FOR LARGE CONCERT HALLS AND FOR SOLOISTS THAT NEED MORE SOUND. GOLD PLATED PROVIDES A BIGGER RESPONSE AND A ROUNDER SOUND. FABRIC LIGATURES ARE RECOMMENDED FOR SMALL ROOMS OR WHEN LOOKING FOR A MORE INTIMATE SOUND. THEY ARE PERFECT FOR ENSEMBLE WORKS.

TODAY'S PLAYERS NEED MORE THAN ONE LIGATURE SINCE THEY WILL NEED A DIFFERENT KIND OF LIGATURE DEPENDING ON THEIR WORK OR THE SITUATION THEY ARE IN, WHETHER THE STYLE IS JAZZ OR CLASSICAL.

EVERY BG LIGATURE PROVIDES A DISTINCT SOUND FOR EACH SITUATION AND STYLE OF MUSIC.

BG LIGATURES ARE HAND-MADE IN FRANCE AND INSPECTED THREE TIMES TO ENSURE OPTIMAL QUALITY.

HOW TO CHOOSE A LIGATURE

- 1 PLAY MUSIC THAT YOU KNOW WELL WITH YOUR OWN LIGATURE FIRST TO CREATE YOUR SOUND REFERENCE IN THE ROOM WHERE YOU ARE TESTING.
- 2 UNDER THE SAME CONDITIONS, CHANGE ONLY ONE PARAMETER OR COMPONENT AT A TIME AND TEST THE NEW LIGATURE FOR SMOOTHNESS IN TRANSITION BETWEEN REGISTERS, CONSISTENT VOLUME AND ITS SOUND QUALITY IN THE LOWER, MIDDLE, AND UPPER RANGES.
- 3 AT THE SAME TIME, LISTEN FOR THE SUBTLE DIFFERENCES WHEN PLAYING PIANISSIMO AND FORTISSIMO PASSAGES.
- 4 TEST HOW EASILY YOU CAN PLAY STACCATO AND ARTICULATE THROUGHOUT THE INSTRUMENT.
- 5 IT IS ALWAYS BETTER TO PLAY TEST WITH ANOTHER PLAYER WHO KNOWS YOUR REGULAR SOUND AND CAN ASSIST YOU TO APPRECIATE HOW YOU FEEL WHILE PLAYING, WHAT YOU HEAR WHEN YOU PLAY AND FINALLY WHAT THE AUDIENCE HEARS.
- 6 AND LAST BUT NO LEAST: TRY VARIOUS LIGATURE MODELS BECAUSE DIFFERENT TYPES OF LIGATURES MEET DIFFERENT REQUIREMENTS.

REMEMBER:

"THE BEST LIGATURE IS THE ONE THAT FITS YOU"

Franck Bichon.

HOW TO CHOOSE YOUR **METAL** LIGATURE

METAL LIGATURES ARE PERFECT FOR LARGE CONCERT HALLS AND FOR SOLOISTS THAT NEED A BIGGER SOUND. EACH PLATING PROVIDES A UNIQUE SOUND



TRADITION: ELEGANT SOUND

**DIRECT SOUND PROJECTION
FREE BLOWING
THE SOLOIST'S LIGATURE**



DUO: GREAT PROJECTION

**POWERFUL SOUND
FLOATING LIGATURE
LESS CONTACT POINTS
VIBRATES FREELY**

5 PLATING	-	5 SOUND BENEFITS
SILVER PLATED	-	CLEAR, BRILLIANT & COLOURFUL SOUND
GOLD LACQUERED	-	BRILLIANT & COLORFUL SOUND
ROSE GOLD	-	COLOURFUL SOUND, SOFT & DEEP
24K GOLD PLATED	-	BRILLIANT, COLOURFUL SOUND. EXCEPTIONAL
BLACK LACQUERED	-	COMPACT AND VERY CENTERED SOUND



ABS CAP

INCLUDED WITH ALL BG LIGATURES



SILVER PLATED
CLEAR, BRILLIANT,
COLOURFUL SOUND



ROSE GOLD
SOFT, DEEP AND
COLOURFUL SOUND



24K GOLD PLATED
BRILLIANT, COLOURFUL SOUND
EXCEPTIONAL RADIANCE



BLACK LACQUERED
COMPACT AND VERY
CENTERED SOUND



SILVER PLATED
BRIGHT SOUND



GOLD LACQUERED
BRILLIANT,
COLOURFUL SOUND



ROSE GOLD
SOFTER, DEEPER AND MORE
FLEXIBLE SOUND



24K GOLD PLATED
RICHER SOUND IN ALL REGISTERS



BLACK LACQUERED
DARK, COMPACT SOUND.
VERY CENTERED SOUND

TRADITION LIGATURES

SILVER PLATED

L2	Bb CLARINET
L80	Eb CLARINET
L90	BASS CLARINET

ROSE GOLD

L39	Bb CLARINET
L89	Eb CLARINET
L99	BASS CLARINET

BLACK LACQUERED

L3B	Bb CLARINET
---------------------	-------------

24K GOLD PLATED

L3	Bb CLARINET
L81	Eb CLARINET
L91	BASS CLARINET

DUO LIGATURES

SILVER PLATED

LD	Bb CLARINET
--------------------	-------------

ROSE GOLD

LD9	Bb CLARINET
---------------------	-------------

BLACK LACQUERED

LD B	Bb CLARINET
----------------------	-------------

GOLD LACQUERED

LD0	Bb CLARINET
---------------------	-------------

24K GOLD PLATED

LD1	Bb CLARINET
---------------------	-------------

HOW TO CHOOSE YOUR **FABRIC** LIGATURE

FABRIC LIGATURES ARE RECOMMENDED FOR SMALL ROOMS OR WHEN LOOKING FOR A MORE INTIMATE SOUND. THEY ARE PERFECT FOR ENSEMBLE WORKS

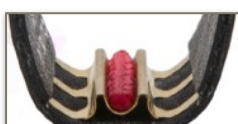
5 SUPPORT PLATES TO HELP YOU FIND YOUR SOUND



NO PLATE



RUBBER



BRASS



SILVER PLATED



24K GOLD PLATED



PLATE MATERIAL

- BENEFITS

NO PLATE	- ROUND SOUND
RUBBER	- DARK SOUND
BRASS	- CLEAR SOUND
SILVER PLATED	- CLEAR AND BRILLIANT SOUND
24K GOLD PLATED	- COMPACT SOUND



ABS CAP

INCLUDED WITH ALL
BG LIGATURES



FLEX & FLEX RED
ROUND SOUND



STANDARD
DARK SOUND



REVELATION
CLEAR SOUND



REVELATION SILVER
CLEAR AND BRILLIANT
SOUND



SUPER REVELATION
BRILLIANT SOUND
EXCEPTIONAL RADIANCE

FLEX

NO PLATE

LFB	Bb CLARINET
LFGB	Bb GERMAN CLAR.
LFE	Eb CLARINET
LFCB	BASS CLARINET

FLEX RED

NO PLATE

LFB9	Bb CLARINET
LFE9	Eb CLARINET
LFCB9	BASS CLARINET

STANDARD

RUBER PLATE

L6	Bb CLARINET
L7	Bb GERMAN CLARINET
L8	Eb CLARINET
L9	BASS CLARINET

REVELATION

BRASS PLATE

L4R	Bb CLARINET
L7 R	Bb GERMAN CLARINET
L8 R	Eb CLARINET
L9 R	BASS CLARINET

REVELATION SILVER

SILVER PLATE

L4RS	Bb CLARINET
----------------------	-------------

SUPER REVELATION

24K GOLD PLATED PLATE

L4SR	Bb CLARINET
L8SR	Eb CLARINET
L9SR	BASS CLARINET
L82SR	ALTO CLARINET
L92SR	CONTRABASS CLAR

MOUTHPIECES



NEW



THE NEW BG B3 MOUTHPIECE IS DESIGNED OF A BIOCOMPATIBLE MATERIAL THAT MEETS THE NEW SANITARY QUALITY STANDARDS, AND IS MADE ENTIRELY IN FRANCE. IT DOES NOT CAUSE ANY TARNISHING OF THE SILVER ON THE CLARINET DUE TO SULFUR FUMES FROM EBONITE MOUTHPIECES.

THE TRADITIONAL CORK HAS BEEN REPLACED BY A SYNTHETIC RING. THIS ALLOWS A TIGHT SEAL AND EXTENDED LIFE. IF THE MUSICIAN WISHES, THE RING CAN BE REPLACED BY A TRADITIONAL CORK.

THE DENSITY OF THE MOUTHPIECE MATERIAL IS CLOSE TO THE DENSITY OF EBONY WOOD, TO OFFER AN EXCEPTIONAL ACOUSTIC RESPONSE IN ALL REGISTERS. **THE BG B3 MOUTHPIECE HAS BEEN DESIGNED FOR EASE OF PLAY** AND IT IS EASY TO FIND A RICH AND ROUND SOUND FROM THE FIRST NOTE YOU PLAY. THE REEDS RECOMMENDED ARE REEDS WITH A STRENGTH OF 2, 2.5, AND 3.

THANKS TO ITS **EXTREME FLEXIBILITY**, THIS MOUTHPIECE ALLOWS GREAT VARIATIONS IN DYNAMICS WHILE REMAINING HOMOGENEOUS. ONE OF THE GREAT QUALITIES OF THIS MOUTHPIECE IS **ITS VERSATILITY**, FACILITATING CHANGES OF STYLE **FROM JAZZ, KLEZMER MUSIC, WORLD AND VARIETY TO CLASSICAL MUSIC** THUS IDEAL FOR DOUBLERS WHO NEED TO PERFORM IN MANY STYLES AND SITUATIONS.

... CHOOSE B3 TO BE FREE !



MADE IN FRANCE



SYNTHETIC RING:
INTERCHANGEABLE
BY A TRADITIONAL CORK



DESIGNED TO BE PLAYED WITH EASE.
RECOMMENDED REED STRENGTH:
2 OR 2.5



FREE
FLOW PACK



FREE
POUCH PM



B0

BG SELECTED ZINNER AS OUR MP MAKER PARTNER TO WORK ON OUR SPECIFIC REQUESTS TO NOT ONLY SUPPLY RAW MATERIAL BUT TO DO HAND FINISHING TO REACH OUR EXPECTATIONS. ZINNER IS A GERMAN COMPANY THAT PROVIDED THE RAW MATERIALS FOR MOST POPULAR US HAND-MADE MOUTHPIECES MAKERS. EACH ONE OF THE **BG B0 MOUTHPIECES** FOR CLARINET ARE HAND-MACHINED BY AN EXPERT WHO ONE BY ONE CONTROLS THEIR PRODUCTION.

THE RESULT IS A WARM AND CENTERED SOUND, WITH GREAT PROJECTION. THE HOMOGENEITY IN EVERY REGISTER IS SIMPLY IMPRESSIVE. THE RESULT OF THE EXCEPTIONAL QUALITY OF THE RAW MATERIAL USED IS A VERY CHARACTERISTIC ROUND SOUND. WITH YEARS OF CONFIDENTIAL TESTING, WE CAN ASSURE THAT DESPITE LONG YEARS OF PLAYING, THE MATERIAL STAYS CONSISTENT AND BG MOUTHPIECE LAST MUCH LONGER THAN MOST POPULAR MOUTHPIECES.

EVERY BG MOUTHPIECE IS REALLY, EFFECTIVELY AND INDIVIDUALLY TESTED BY A PROFESSIONAL MUSICIAN BEFORE LEAVING THE BG FACTORY.

BG B0 MOUTHPIECES ARE PERFECT FOR CHAMBER MUSIC, ENSEMBLES OR SOLOISTS.



Made in Germany

BG MOUTHPIECES

			Opening	Facing
B0	Bb CLARINET	ZINNER MATERIAL. BLACK COLOR	1.15 MM	18.5 MM
B3	Bb CLARINET	BIOCOMPATIBLE MATERIAL. RED COLOR	1.15 MM	19.2 MM
B3 B	Bb CLARINET	BIOCOMPATIBLE MATERIAL. BLACK COLOR	1.15 MM	19.2 MM

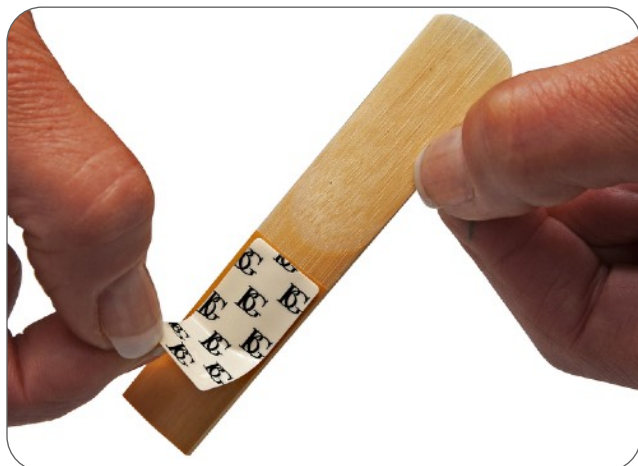
TIPS OF FRANCK BICHON

HOW TO EASILY IMPROVE YOUR COMFORT OF PLAYING



REED PERFORMERS:

THE REED PERFORMER IS A BG INNOVATION. MAKES GOOD REEDS LAST TWICE AS LONG. SAVES BAD REEDS BY IMPROVING THEIR PLAYABILITY. GIVES WARMER TONE TO WEAK & FUZZY REEDS.



ON GOOD NATURAL REEDS:

- STABILIZES THIN CANE CREATING STABLE SOUND
- INCREASES REED LIFE AT LEAST TWICE AS LONG
- HELPS TO ENSURE SAVING REEDS FOR CONCERT

ON SYNTHETIC REEDS:

- GIVES A ROUND SOUND THROUGH ALL REGISTERS.
- HELPS LIGATURE GRIP.

ON POOR NATURAL REEDS:

- SAVES BAD REEDS IMPROVING THEIR PLAYABILITY.
- REMOVES FUZZY SOUNDS FROM BAD REEDS.
- GETS WARMEST TONE FROM WEAK REEDS.

HANNAH SHILVOCK & THE REED PERFORMER



LIKE OTHERS BG ARTIST, HANNAH SHILLOCK, WAS HESITANT TO TRY THE REED PERFORMER THIS PAST YEAR BEING THAT THERE IS NOTHING IN THE MARKET LIKE IT. IN THE VIDEO, YOU WILL SEE HANNAH PLAY TEST HER REEDS WITH AND WITHOUT IT. AND YOU WILL HEAR HOW IT, AS SAID BY HANNAH—" **PLAYING THE REED PERFORMER ON A REALLY THIN REED, IT JUST MAKES THINGS FEEL REALLY MORE STABLE INSIDE MY MOUTH, AND I REALLY LIKE IT. I'D HIGHLY RECOMMEND.**"

NEW
PACK OF 6 PCS

BOX OF 30 DE PCS

[A80 S](#) BB CLARINET, SOPRANO & ALTO SAX

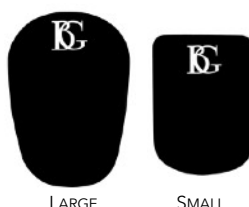
[A80 L](#) BASS CLAR, TENOR & BARI SAX

[A80 SB](#) BB CLARINET, SOPRANO & ALTO SAX

[A80 LB](#) BASS CLAR, TENOR & BARI SAX

MOUTHPIECE CUSHIONS: 2 SIZES - 3 THICKNESSES - 2 FINISHES

PROTECTS THE MOUTHPIECE FROM DAMAGE OF TEETH AND INCREASES COMFORT FROM THE VIBRATIONS WHICH DISTORT THE PLAYERS PERCEPTION OF THEIR TONE. MADE FROM SOFT AND LONG LASTING MATERIAL. SUITABLE FOR BOTH CLARINET AND SAXOPHONE.



PACK OF 6 DE PCS.

A10 S	BLACK	SMALL	0.8 MM
A10 L	BLACK	LARGE	0.8 MM
A11 S	CLEAR	SMALL	0.4 MM
A11 L	CLEAR	LARGE	0.4 MM
A12 S	CLEAR	SMALL	0.9 MM
A12 L	CLEAR	LARGE	0.9 MM

BOX OF 48 DE PCS.

A10 SB	BLACK	SMALL	0.8 MM
A10 LB	BLACK	LARGE	0.8 MM
A11 SB	CLEAR	SMALL	0.4 MM
A11 LB	CLEAR	LARGE	0.4 MM
A12 SB	CLEAR	SMALL	0.9 MM
A12 LB	CLEAR	LARGE	0.9 MM



FREE REUSABLE BOX.
48 PCS IN BULK.

ACCESSORIES

NEW

CORK GREASE



LIKE ALL OF BG FRANCE'S PRODUCTS; BG'S CORK GREASE IS A PREMIUM QUALITY LUBRICANT FOR CORKS. BY USING BG'S CORK GREASE, YOU WILL HELP YOUR CORKS LAST LONGER AND STAY AIRTIGHT.

THE GREASE COMES IN A SMALL, TRAVEL FRIENDLY TUBE. THE TUBE ALLOWS FOR EASY APPLICATION. PROTECT YOUR CORKS WITH BG!

BG CORK GREASE

[A1B 18](#) ONE PACK OF 18 PCS

[A1B 108](#) SIX PACKS OF 18 PCS

THUMB REST CUSHION

SOFT AND DURABLE. PROTECTS THE THUMB FROM FORMING PAINFUL CALLUSES. AVAILABLE FOR STANDARD OR ADJUSTABLE THUMB RESTS. FITS BOTH OBOES AND CLARINETS.

PACK OF 1 PC.

[A21](#) REGULAR. CLARINET AND OBOE

[A23](#) LARGE. CLARINET AND OBOE



A21 - REGULAR



A23 - LARGE

BOX OF 30 PCS

[A21 B](#) REGULAR. CLARINET AND OBOE

[A23 B](#) LARGE. CLARINET AND OBOE

CLARINET STAND

LIGHTWEIGHT, COMPACT EASY TO SET UP. CROSS DESIGN FOR EXCELLENT STABILITY. MADE FROM ABS PLASTIC. PACKS FLAT

STAND

[A40](#) Bb CLARINET



A40 - Bb CLARINET

WITH GRIPS

SPARE PARTS

SCREWS FOR METAL & FLEX LIGATURES

ASGP	SAX + CLARINET	GOLD PLATED
ASGP9	SAX + CLARINET	ROSE GOLD
ASSP	SAX + CLARINET	SILVER PLATED



AS GP

AS GP9

AS SP

NUTS FOR FABRIC LIGATURES

ANGL	SAX LIGATURE	GOLD LACQUERED
ANNP	CLARINET + SAX JAZZ LIG	NICKEL PLATED



AN GL

AN NP

DUO PARTS HOLDER KIT

ADRH SAX + CLARINET - SET OF 2 PCS + ALLEN KEY 12,00 €



AD RH